

SOLD Large 5 Bed 3 bath w/ Bonus Room Home For Sale in

4074349175

13051 Moss Park Ridge Drive
Orlando, Florida 32832

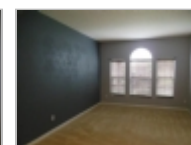
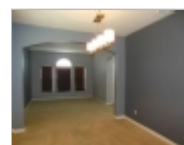
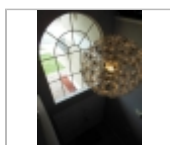
Price: \$319,900.00 **Size: 4054 SqFt**

5 Beds 3 Baths Single Family House

Taxes: \$ 4,754.00

For more information:

www.thejaymyersteam.com



Property Description

LOCATION, LOCATION, LOCATION!! Don't miss out on this Exceptional Opportunity in Moss Park Ridge!! You've found the perfect MOVE-IN READY home, with the modern updates you're looking for at a price you can't resist! Make this expansive 2-story, 3420 sqft, 5 bedroom, 3 bath home your families today! Located in a Desirable Moss Park Ridge and walking distance to the brand new INNOVATION PARK MIDDLE SCHOOL, opening in Fall 2017. An inviting covered front entry with a paver stone walk leads you inside. Separate formal Living and Dining rooms. The eat in Kitchen is spacious with an abundance of cabinet space, counter space & breakfast bar. The Kitchen opens to a large Family room plus a huge upstairs Bonus/Game Room. 1 Bed and 1 Bath on the 1st floor, rest of the Bedrooms and Baths are upstairs. Master Suite boasts walk-in closets, separate vanities, shower, garden tub plus a sitting area it's a perfect retreat for Mom and Dad. Large Interior Laundry. Covered lanai. 2-car Garage with paver stone driveway. Moss Park Ridge offers a community park, ballfields, basketball, 2 playgrounds and minutes to exceptional shopping and dining in Lake Nona and surrounding areas. Convenient to major roads and highways, 30 minutes to the Port Canaveral and the Beach, WDW, Downtown Orlando and a short 15 minutes to OIA. DO NOT WAIT - THIS HOME WILL NOT LAST LONG AT THIS OFFERING. SOLD AS-IS.

We answer calls 7 days a week at 407-434-9175
View all of our properties at <http://407sales.com>

Price: \$319,900.00
13051 Moss Park Ridge Drive
Orlando, Florida 32832-7093
Contact: Orlando Realty & Property Management
Brian Goodwin
Brian@407rentals.com
Prospective Buyers: 407-434-9175

TO SET UP A SHOWING, CLICK HERE <http://www.407rentals.com/buying-selling>

Subdivision: Moss Park Ridge
Bedrooms: 5
Bathrooms: 3
Property Sub Type: Two Story Single Family Home
Square Ft: 4054
Year Built: 2006

*Moss Park Elementary School
*Lake Nona Middle School



**ORLANDO REALTY
& PROPERTY MANAGEMENT**

Orlando Realty and Property Management

Office Location
1906 Hillcrest Street ([map](#))
Orlando, Florida 32803

Brian Goodwin
4074349175



- *Lake Nona High School
- *In County
- *Level
- *Sidewalk
- *Lot-Irregular
- *Shingle Roof
- *Slab Foundation
- *Block & Stucco Exterior Construction
- *Mature Landscaping
- *Trees/Landscaped
- *Irrigation System
- *Patio/Porch/Deck Covered
- *Sliding Doors
- *Attached 2 Car Garage W/Opener
- *Cable Connected
- *Street Lights
- *Public Sewer
- *County Water
- *Bonus Room
- *Inside Utility
- *Central Heating & Air Conditioning
- *Appliances Included: Microwave Hood, Refrigerator, Hot Water Electric, Dishwasher, Oven, Disposal, Washer, Dryer, Range, & Water Softener Owned
- *Solid Surface Counters
- *Walk In Closet
- *Solid Wood Cabinets
- *Washer/Dryer Hookups
- *Blinds/Shades
- *Ceiling Fans
- *Inside Utility
- *Unfurnished
- *Smoke Alarms
- *Kitchen Features Breakfast Bar
- *Eating Space In Kitchen
- *Living Room/Great Room
- *Formal Dining Room Separate
- *Split Bedroom
- *Volume Ceilings
- *Master Bath Features Dual Sinks, Garden Tub, & Tub W/Separate Shower Stall
- *Laminate, Carpet, & Ceramic Tile Flooring
- *Kitchen First Level 20 X 11 Ceramic Tile Flooring
- *Master Bedroom Second Level 19 X 14 Carpet Flooring
- *Living Room First Level 14 X 11 Carpet Flooring
- *Bonus Room Second Level 18 X 16 Carpet Flooring
- *Dining Room First Level 12 X 10 Carpet Flooring
- *Family Room First Level 22 X 14 Carpet Flooring
- *2nd Bedroom First Level 13 X 11 Laminate Flooring
- *3rd Bedroom Second Level 12 X 11 Carpet Flooring
- *4th Bedroom Second Level 17 X 12 Laminate Flooring
- *5th Bedroom Second Level 12 X 11 Carpet Flooring
- *COMMUNITY Park
- *COMMUNITY Playground
- *Deed Restrictions
- *Quarterly HOA Fee \$275.00
- *Financing Available: Cash, Conventional, FHA, & VA
- *Vacant
- *Sold AS-IS
- *HOA Disclosure Available
- *Seller Disclosure Available
- *No Sign

TO SET UP A SHOWING, CLICK HERE: <http://www.407rentals.com/buying-selling>

DRIVING DIRECTIONS: SR-417 N to exit #22/Narcoossee Rd (L) Narcoossee Rd/CR-15 N (R) Moss Park Rd (L) John Wycliffe Blvd (L) Wewahootee Rd (R) Moss Park Ridge Dr (L) Moss Park Ridge Dr home on the Right.

We answer calls 7 days a week at 407-434-9175

View all of our properties at <http://407sales.com/>